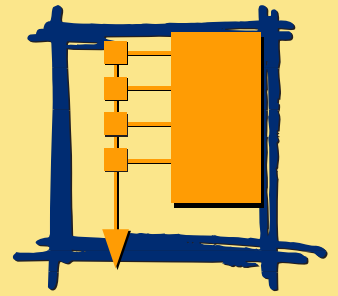
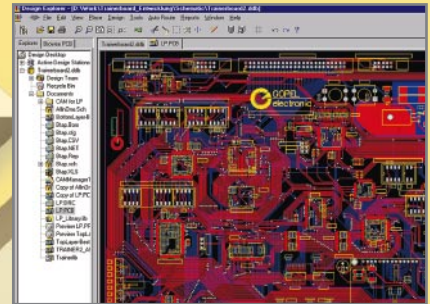


Boundary Scan

A universal tool for substantial solutions



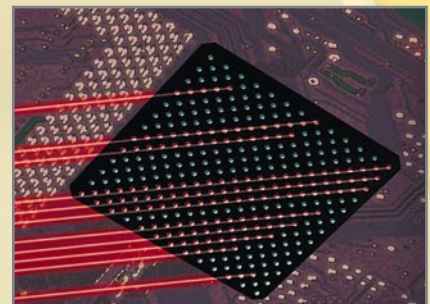
→ **Would you like to shorten the time it takes to verify your prototypes and to bring your products to market?**



→ **Would you like to combine the benefits of test reuse with in-system programming throughout the product life cycle?**



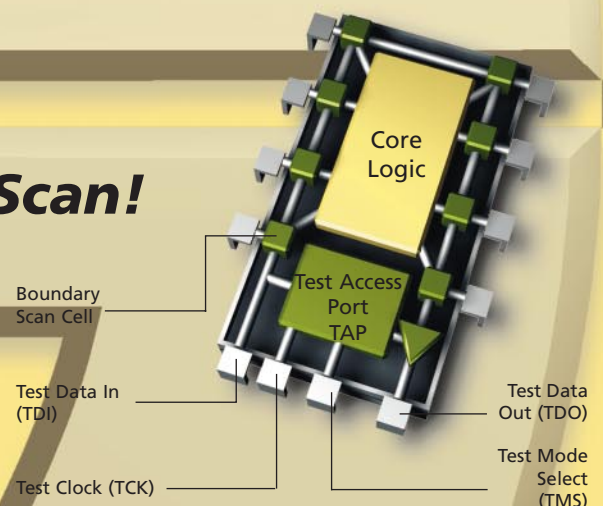
→ **Are you looking for a low cost test strategy that is able to cope with today's highly complex PCBs and system assemblies?**



Your solution: Boundary Scan!

Boundary Scan (IEEE 1149.1) supports the entire product life cycle

- **increased testability**
- **significant cost reduction**
- **shorten Time-to-Market**
- **increased product quality**
- **strong competitive position**



Boundary Scan: GOPEL electronic

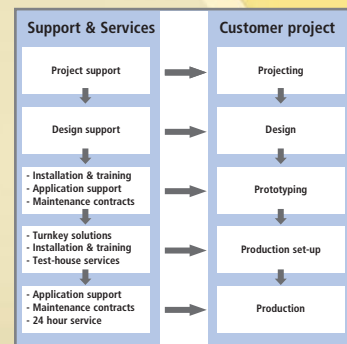


**World market leader with
the highest experience**

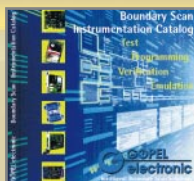
**Widest range of innovative
software and hardware**



**Philosophy of an optimal service
and customer support**



**Worldwide presence through
an extensive distribution and
service network**



Authorized distributor:



More detailed information about the Boundary Scan technology as well as our products can be found in our 12-page leaflet and the product catalogue (available as CD). You are welcome to order these complementary items.

Headquarters:
GOPEL electronic GmbH
Goeschwitzer Str. 58/60
07745 Jena/Germany

Tel.: +49-3641-68 96-0
Fax: +49-3641-68 96-44
E-Mail: sales@goepel.com

Internet: www.goepel.com

US Branch Office:
GOPEL electronics LLC
9600 Great Hills Trail
Suite 150 West
Austin, TX 78759

Phone: (512) 502-3010
Fax: (512) 502-3076
E-Mail: us-sales@goepel.com



ISO 9001 registered company

Please visit our website for further information or contact us directly