

twDocumentor publishes, with one click, all your documents and reports:

- Manual assembly process and shop floor documentation,
- Test instruction sheets,
- Testability analysis or test coverage reports.

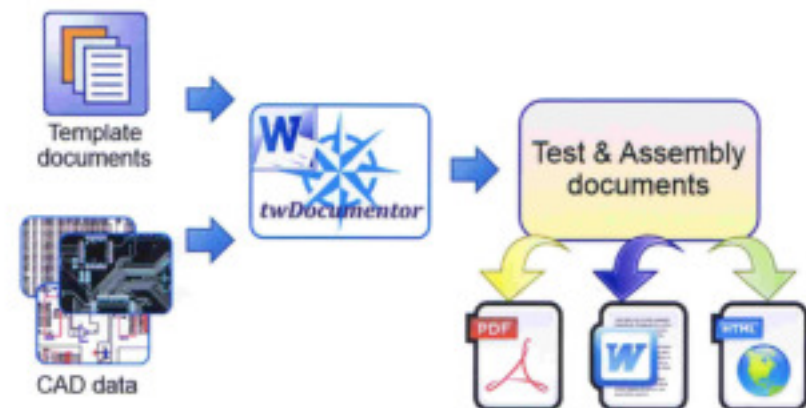
Just load one of the templates previously created with Microsoft Word, select the TestWay project to document and automatically create the document.

It can then be modified with job specific information, images or video files for explicit instructions.

Several output formats are available: DOC, PDF or HTML.

twDocumentor is a dedicated toolbar add-in for Microsoft Word that allows direct access to twExpress and QuadView and their specialized functions:

- Load the CAD data and BOM,
- View the PCB,
- Insert board views,
- Create tables linked to the board views,
- Select and highlight component colors
- Access to CAD attributes and TestWay analysis results,
- Run TestWay rules or customer's rules,
- Use TestWay scripts to generate custom files.



### Key product benefits:

- Immediate return on investment**  
 Improve team productivity by eliminating repetitive tasks that have no added value. Simplify procedures by automating the process flow.
- Ease of use**  
 twDocumentor is based on Microsoft Word and powered by QuadView or twExpress. Microsoft Word is an industry standard package that your engineering team already know how to use.
- Industry Standard**  
 ECMA International, recognized for their work in the standardization of information and communication technologies, has designated Word formats Microsoft Office Open XML as an industry standard.
- Quick Document Creation**  
 Once the template is designed, it is possible to generate instruction sheets, assembly documentation, checklists and customized analysis reports, within minutes.
- Automatic table creation**  
 Powerful search criteria are used to define what components should be shown and with what information. twDocumentor adds proprietary comments to manage tables and board drawing insertion.
- Flexible color assignment**  
 twDocumentor automatically selects the component highlight colors for ease of navigation between the information table and the board views.
- Fully Interactive Cross-probing**  
 Documents deployed within QuadView have full cross-probe capability between the work instruction, layout, schematic and netlist views, as well as other Aster products such as TestWay and QUAD.
- Layout from native CAD formats**  
 Create layout views from standard CAD formats such as GENCAD, CAMCAD, FATF, ODB++, or direct from native CAD layout data.



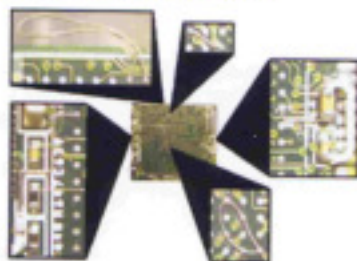
## ENGINEERING CHANGE ORDER

twECO is designed to manage post fabrication PCB modifications such as track cuts, drilled vias; wire straps, component addition or removals and glue dots, etc...

All these actions are automatically documented and can be exported to **twDocumentor** or a text file.

A BOM comparison is performed automatically, which simplifies the creation of documents detailing the actions necessary to upgrade the board.

This innovative feature greatly reduces the engineering effort in the documentation and control of ECO.

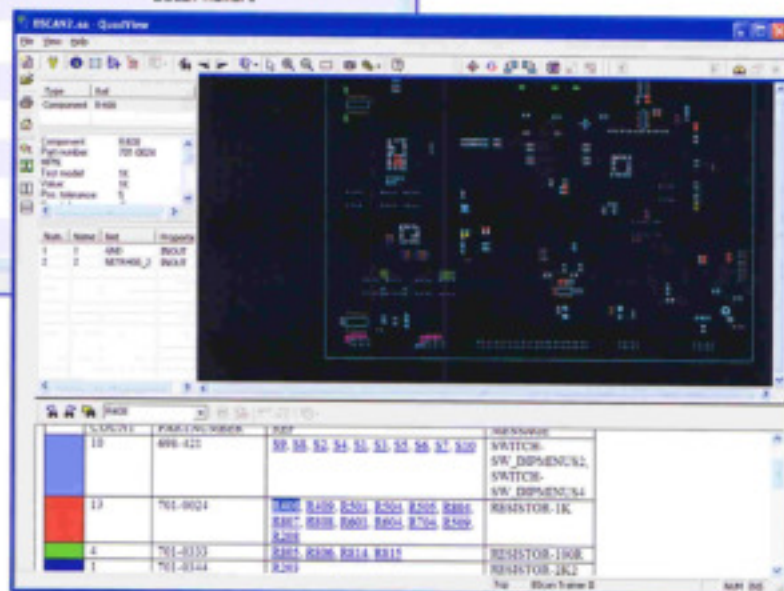
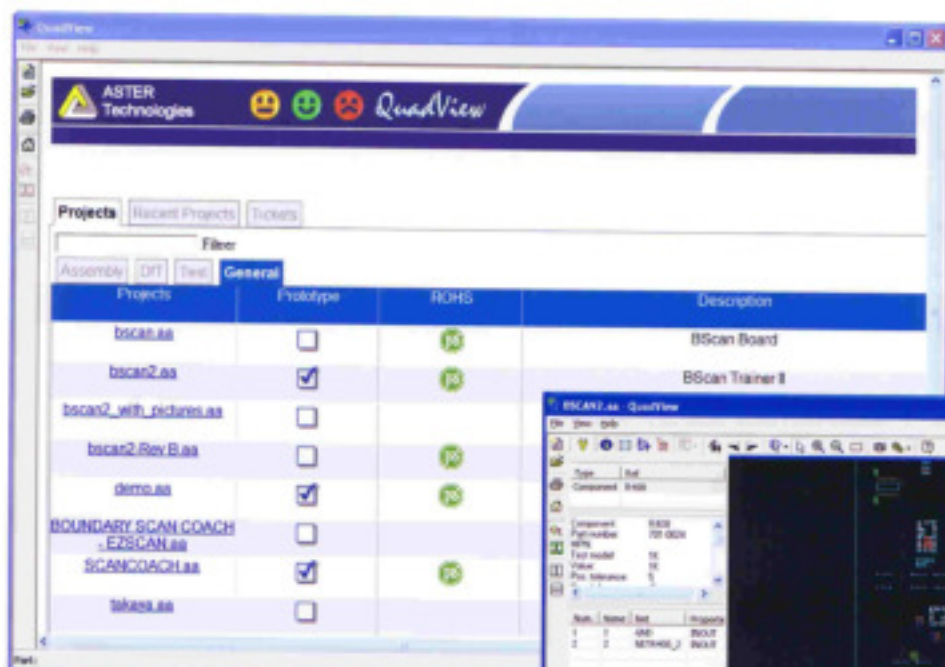


## DOCUMENTOR PORTAL

Documentor Portal is an information management tool. As part of the Manufacturing Execution System, it is used to organize the documentation and management of user groups to access it. All information is centralized and visible only to authorized users.

This tool is free with QuadView and offers users the ability to graphically access CAD data. It will manage all information relating to a PCB; assembly documentation, test procedures, test coverage analysis reports, testability reports, as well as other design and/or manufacturing documentation.

Using the HTML format, **twDocumentor** can provide a "Paperless" solution where the documents are fully interactive within QuadView.



Visit our website [www.aster-technologies.com](http://www.aster-technologies.com)

Copyright © 2013 ASTER Technologies. TestWay, twExpress, twDocumentor QuadView and QUAD are trademarks of ASTER Technologies. All other trademarks mentioned in this document are trademarks of their respective owners.

### Corporate Headquarters

ASTER Technologies  
55 bis, rue de Rennes  
F-35510 Cesson-Sevigne  
France  
Tél. : +33 (0)2 99 83 01 01  
Fax : +33 (0)2 99 83 01 00  
[sales@aster-technologies.com](mailto:sales@aster-technologies.com)

### United Kingdom

ASTER Technologies Ltd.  
PO Box 327  
Tarporeley  
Cheshire, CW6 9WD  
Tél. : +44 (0) 1829 261557  
Mob. : +44 (0) 7711 927840  
[sales-UK@aster-technologies.com](mailto:sales-UK@aster-technologies.com)

